

# SEVILLA

MATTAMY  
homes

## The Copeland

1,706 Sq.Ft.  
*Single Story*



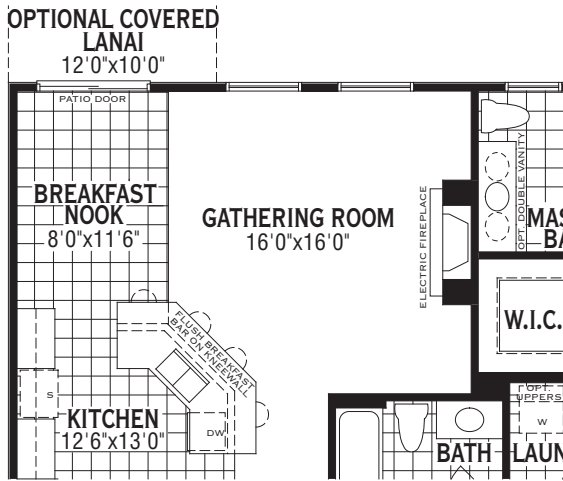
# The Copeland, 1,706 Sq.Ft.



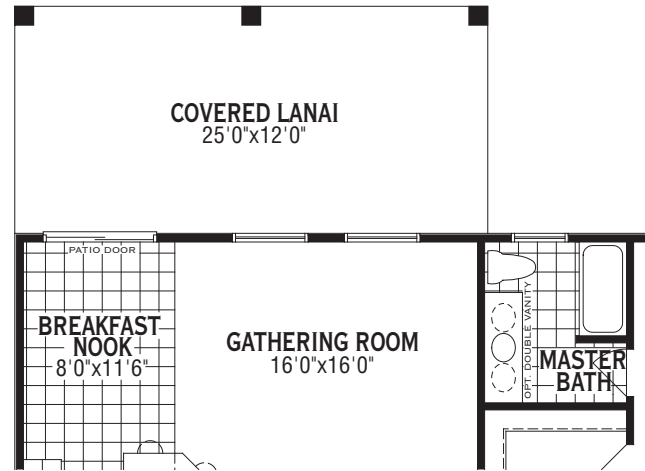
# The Copeland, 1,706 Sq.Ft.

## Architect's Choice Options

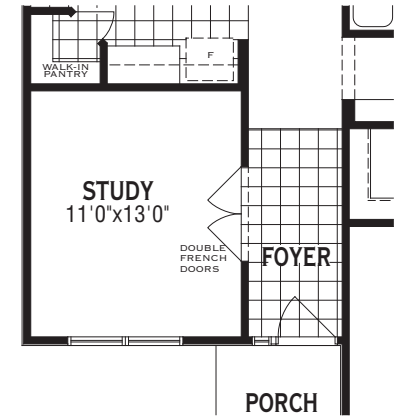
1 Fireplace In Gathering Room



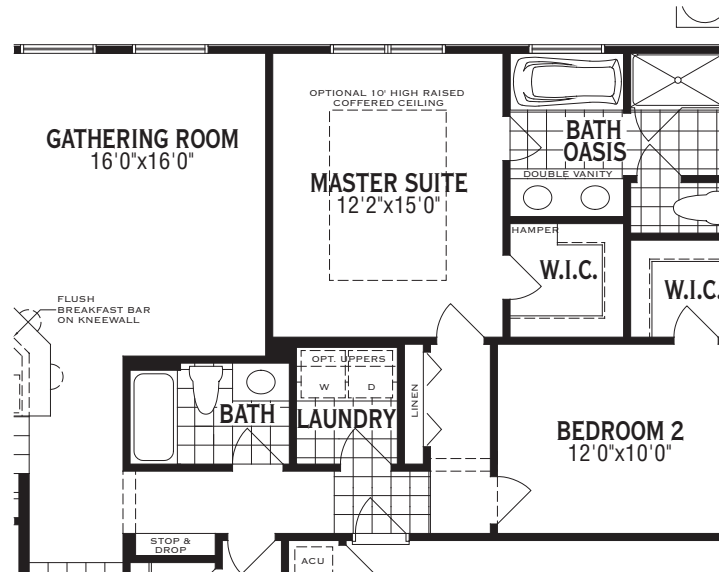
2 Large Lanai



3 Study In Lieu Of Dining Room



4 Bath Oasis





# *The Journey Toward A New Home*



The largest purchase you will make in your lifetime is a new home. Home building is a journey of many steps. We believe that journey is much more fulfilling and enjoyable if we take it step-by-step, together. We hope the information in this brochure will be useful in helping you make the first important step; choosing a builder. We would be honored if you entrusted us with the creation of your new home.

Thank You.